

Occurrence, harmful effects and analytical determination of Ochratoxin A in coffee

Abdulmumin A Nuhu

Chemistry Department, Ahmadu Bello University, Zaria, Kaduna, Nigeria.

ARTICLE INFO

Article history:

Received on: 05/11/2014

Revised on: 22/11/2014

Accepted on: 04/12/2014

Available online: 30/01/2015

Key words:

Analytical methods, *Aspergillus*, coffee, Ochratoxin A, *Penicillium*, toxic effects.

ABSTRACT

Coffee is an important stimulant and a good source of bioactive constituents with beneficial health effects. Coffee beans are readily attacked by the growth and proliferation of several fungal species from the genera *Aspergillus* and *Penicillium*. Ochratoxin A, an important toxin produced by these fungal entities, is commonly found in coffee products, from farm to cup-thus challenging the popularity of this world-acclaimed beverage. The toxin has been shown to be nephrotoxic and hepatotoxic, among other deleterious effects. This has prompted the European Commission to set limits for ochratoxin A in coffee products. In order to abide by these regulatory codes, various analytical methods have been developed and deployed in the analysis of the toxin in green coffee beans, roasted coffee and instant coffee. This review will discuss the occurrence of ochratoxin A, its harmful effects and various analytical methods that have been applied in its detection and quantification in coffee products.

INTRODUCTION

Since its introduction into Arabia across the *Bahr al-Yaman*, "Sea of Yemen" (Red Sea), many centuries ago (Miran, 2012), popularity of coffee as an important beverage has continued to grow. Apart from its organoleptic properties, coffee is a functional beverage with many beneficial effects attributed to its consumption due to the presence of some major and minor constituents with bioactive potentials (Esquivel and Jiménez, 2012; Nuhu *et al.*, 2014). These chemical compounds include caffeine (Prediger, 2010), trigonelline (Dijk *et al.*, 2009; Yoshinari and Igarashi, 2010), chlorogenic acid (Moon *et al.*, 2009) and diterpenes (Sridevi *et al.*, 2011). Coffee is produced from green and roasted coffee beans of different varieties; but two main species, *Coffea arabica* and *Coffea canephora* have remained the most economically viable ones (Ky *et al.*, 2001). This cash crop is now significantly produced as an export commodity in three geographical regions of the world: America, Asia and Africa (Serra *et al.*, 2005). Challenges to this important business include market shocks, extreme weather, pests, parasites

and import regulations (Martins *et al.*, 2003; Tucker *et al.*, 2010; Burbano *et al.*, 2012; Nugroho, 2014). The quality of coffee bean and its economic value are partly determined by its physical characteristics (Kathurima *et al.*, 2009; Iamanaka *et al.*, 2014). A daunting challenge faced by producers is how to prevent coffee products from the growth and proliferation of mycotoxin producing molds. From farm to cup, mycotoxins, especially ochratoxin A (OTA), one of the most widespread, can now be found in coffee beans and its beverage (Bucheli and Taniwaki, 2002; Duarte *et al.*, 2009; Velmourougane *et al.*, 2010).

This mycotoxin is produced by mainly two genera of microorganisms, *Penicillium* and *Aspergillus* (Pardo *et al.*, 2004; Perrone *et al.*, 2007; Cabanes *et al.*, 2010; Fernández-Baldo *et al.*, 2011). Because of the risk factors associated with its presence in biological systems (Clark and Snedeker, 2006), there is a great need for sound analytical methods for its characterization and quantitative analysis. Some general reviews have been written on methods for the determination of mycotoxins in foods and drinks (Turner *et al.*, 2009; Koppen *et al.*, 2010; Kaushik *et al.*, 2013). This work is particularly dedicated to methods that have been applied in the analytical determination of OTA in coffee due to its social and economic importance.

* Corresponding Author

Abdulmumin A Nuhu, Chemistry Department, Ahmadu Bello University, Zaria, Kaduna, Nigeria. Email: aanuhu@yahoo.com

OCHRATOXIN A

Chemistry and occurrence

Chemically, OTA (Figure 1) is a chlorophenolic compound in which a dihydroisocoumarin moiety is joined to L-phenylalanine in an amide-linkage (Khoury and Atoui, 2010). Its IUPAC designation is N-[[[(3R)-5-chloro-8-hydroxy-3-methyl-1-oxo-3,4-dihydro-1H-isochromen-7-yl]carbonyl]-L-phenylalanine. Various species of *Aspergillus* and *Penicillium* produce OTA (Anand and Rati, 2005; Castellanos-Onorio *et al.*, 2011; Amezcua *et al.*, 2012; Oliveira *et al.*, 2013). Gil-Serna *et al.* (2011) suggested that due to high OTA production capacities of *Aspergillus steynii* and *Aspergillus westerdijkiae*, and the wide range of products they contaminate, these species might represent a major potential risk of OTA contamination.

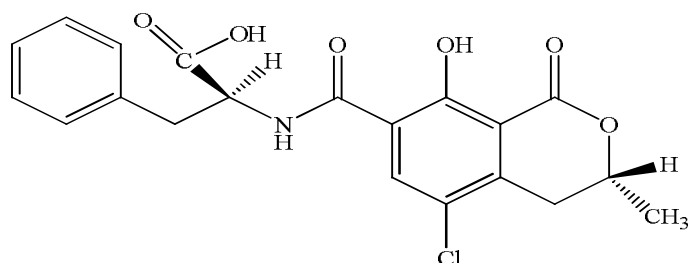


Fig. 1: Chemical structure of ochratoxin A.

OTA is found in different food and drink items (Monaci and Palmisano, 2004). Specifically, it has been detected in pork products (Bertuzzi *et al.*, 2013) even though occurrence in dairy products is generally negligible (EFSA, 2006) –chickpea (Rahimi *et al.*, 2013), cocoa (Jayeola *et al.*, 2011; Mounjouenpou *et al.*, 2011), cereal (Aqai *et al.*, 2011), and bear and wine (Gambelli and D'Addezio, 2009; Wu *et al.*, 2011).

Importantly, it has been detected in coffee beans (Studer-Rohr *et al.*, 1995; Palacios-Cabrera *et al.*, 2004) and in ready-to-drink coffee (Noba *et al.*, 2009). Analysis of green coffee beans by Micco *et al.* (1989) showed up to 58% contamination level. Interestingly, Nehad *et al.* (2005) found that decaffeination of coffee may even encourage the growth of OTA-producing species.

Although roasting causes degradation of OTA (Romani *et al.*, 2003; Castellanos-Onorio *et al.*, 2011), some amount may still be found in commercial roasted coffee (Tsubouchi *et al.*, 1988). Mounjouenpou *et al.* (2013) found that, compared to pure Arabica and mixed coffee brands, pure Robusta coffee was the most contaminated in the range of 0.6-18 μgKg^{-1} . This result may be worrisome considering that the maximum contaminant level set by the European Commission is 5 μgKg^{-1} for roasted coffee beans and 10 μgKg^{-1} for instant coffee (The Commission of the European Communities, EC No. 1881/2006).

Harmful effects

As a food contaminant, OTA does not only affect the physical characteristics of coffee, its presence also contributes to

human exposure (Studer-Rohr *et al.*, 1995; Duarte *et al.*, 2011; Hennemeier *et al.*, 2012). In Saudi Arabia where *Qahwah* (coffee) is a very popular beverage, high degree of OTA contamination was found (Bokhari, 2007). OTA has been detected in human milk and cord serum, and values corresponded with maternal dietary habits (Biasucci *et al.*, 2010).

Its transformation into OT- α , OTA-glucosides and other metabolites may elicit some negative responses in different biological systems (Zepnik *et al.*, 2003). OTA is hepatotoxic, and this effect on human hepatoma cells HepG2 is strongly dependent on concentration of proteins in the culture medium (Bösch-Saadatmandi *et al.*, 2006).

Probably due to its phenolic component, OTA has a high affinity for human serum albumin at the same binding site of natural flavonoid aglycones (Poor *et al.*, 2012). Cremer *et al.* (2012) have found that OTA has a strong pro-inflammatory effect on nasal epithelial cell cultures, significantly stimulating the increased release of interleukins, IL-6 and IL-8. OTA fed to gestating rabbits resulted in skeletal and soft tissues anomalies, a strong indication of its teratogenic effect (Wangikar *et al.*, 2004). Two doses of this mycotoxin (1000 and 2000 $\mu\text{g/kg}$ of feed) fed to white Leghorn cockerels for seven weeks resulted in significant decrease in the counts of important hematological and serum biochemical parameters, including erythrocytes, leukocytes, hemoglobin and pack cell volume (Ahmad *et al.*, 2012). In a different study, endocrine disrupting activity was displayed through steroidogenic effect after exposing H295R cells to OTA at concentration range of 0.1–1000 ng/ml, resulting in increased production of the hormone estradiol, three times that of solvent control (Frizzell *et al.*, 2013). This effect was further investigated in human placental cells JEG-3 in vitro. After 72-96 h exposure at both cytotoxic and non-cytotoxic levels, 3 β -hydroxysteroiddehydrogenase/isomerase mRNA expression was increased by 281–378% (Woo *et al.*, 2013).

OTA may hinder the normal functioning of kidney by decreasing the production of vascular endothelial growth factor (Stachurska *et al.*, 2011). Elsewhere, Abdu *et al.* (2011) have observed several histopathological changes in the renal corpuscles of rats exposed to OTA which might ultimately lead to renal failure. Previously, Stoev (2010) has examined the carcinogenic effects of OTA in various internal organs of Plymouth Rock chicks. In this study, only liver and kidney were the target organs for OTA carcinogenicity, even though many degenerative effects were observed in brain, kidney, liver and lymphoid organs. A site-specific response was observed when gpt- δ rats were exposed to carcinogenic doses of OTA for 13 weeks, leading to induction of karyomegaly and apoptosis at the outer stripe of the outer kidney medulla (Hibi *et al.*, 2011). OTA forms covalent adduct with DNA (Mantle *et al.*, 2010) and causes direct or oxygenic DNA damage (Ali *et al.*, 2011). The key to these cytotoxic and carcinogenic effects of OTA might be its perturbation of mitotic processes through inhibition of histone acetyltransferases (Czakai *et al.*, 2011).

Table 1: Summary of analytical methods for the determination of ochratoxin A in coffee.

Matrix	Clean-up	Separation/Detection	LOD	Reference
Green coffee	-	FTEIA ^a -Chemiluminescence	8 ng/g	Sibanda <i>et al.</i> , 2001
Roasted coffee	SP,IAC	LC-FLD	<0.2 ng/g	Entwisle <i>et al.</i> , 2001
Green coffee	IAC	TLC-FLD	<0.2 ng/g	Pittet <i>et al.</i> , 2002
Green coffee	IAC	TLC-FLD/Densitometry	0.5 µg/kg	Santos and Vargas, 2002
Green/Roasted coffee	SP	HPLC-FLD/MS	0.1 ng/g	Ventura <i>et al.</i> , 2003
Green coffee	IAC	HPLC-FLD	0.16 ng/g	Gollucke <i>et al.</i> , 2004
Green coffee	IAC	LC-FLD	<0.12 ng/g	Vargas <i>et al.</i> , 2005
Green coffee	LL	TLC-FLD	5 µg/kg	Ventura <i>et al.</i> , 2005
Green coffee	-	ELISA-FLD	3.75 ng/g	Fujii <i>et al.</i> , 2006
Green, Roasted, Instant coffee	IAC	HPLC-FLD	0.80 ng/g	Fujii <i>et al.</i> , 2007
Green coffee	IAC	Biochip-Chemiluminescence	≤2.1 µg/kg	Sauceda-Friebe <i>et al.</i> , 2011
Instant coffee	IAC	HPLC-FLD	0.05 µg/kg	Vecchio <i>et al.</i> , 2012
Roasted coffee	IAC	HPLC-FLD	0.01 ng/g	Graziani <i>et al.</i> , 2012
Roasted coffee	IAC	LC/ESI/MS/MS	1.0 ng/g	Bandeira <i>et al.</i> , 2012a
Green coffee	IAC	LC-MS/MS	1.2 ng/g	Bandeira <i>et al.</i> , 2012b
Instant coffee	-	Biosensor-CRET ^b	0.5 ppb	Mun <i>et al.</i> , 2013
Ground roasted coffee	IAC	HPLC-FLD	<0.03 µg/kg	Mounjouenpon <i>et al.</i> , 2013

^a Flow-through enzyme immunoassay, ^b Chemiluminescence resonance energy transfer

Extraction and Clean-Up Methods for ota in Coffee

Detection of OTA in coffee can be done without going through sample preparation steps of extraction and sample clean-up. In many instances, however, these steps are necessary in order to remove interferences and improve analytical sensitivity. To this end, liquid-liquid extraction (LLE) and solid-liquid extraction (SLE) of both soluble and solid coffee using suitable solvents can be encountered (Mun *et al.*, 2013; Ventura *et al.*, 2005). In order to expedite desorption of analytes from their parent matrixes, these processes are sometimes driven or facilitated by ultrasonic agitation (Fujii *et al.*, 2007) or microwave heating (Graziani *et al.*, 2012). A mixture of methanol and sodium bicarbonate is commonly applied as extraction solvent for OTA in different matrixes (Bandeira *et al.*, 2012a; Santos and Vargas, 2002; Vargas *et al.*, 2005). Arguably, the most commonly applied clean-up techniques are liquid-liquid (LL), solid-phase (SP), and immunoaffinity column (IAC) procedures. In some cases, both extraction and clean-up procedures are carried out simultaneously (Sibanda *et al.*, 2002).

Immunoaffinity column clean-up methods

In the sample preparation of OTA for analysis, IAC is used for the clean-up of extracts from green coffee beans, roasted coffee beans and soluble or instant coffee (Pittet *et al.*, 1996; Diaz *et al.*, 2004). IAC, as a clean-up system for OTA (at concentration > 1.2 ng/g), is officially recommended by the Association of Official Analytical Chemists (Entwisle *et al.*, 2001; Ahmed *et al.*, 2007). After washing the column with water, the prepared extract is usually diluted in phosphate buffered saline (PBS) and then run through the column at an appropriate flow rate; the column is then rinsed with the PBS, dried under vacuum and the OTA content eluted with a suitable solvent such as methanol (Mounjouenpon *et al.*, 2013).

IACs use antibodies that are specific for OTA (Lobeau *et al.*, 2005; Vargas *et al.*, 2005), thus creating an antigen-antibody complex that is the basis for this clean-up procedure. Columns, such as Afla-Ochra-Zea (Roswitha and Klaus, 2004),

OchraPrep (Vanessa and Ana, 2013), OchraTest (Graziani *et al.*, 2012; Vincenzo *et al.*, 2012) and Afla OchraTest (Trucksess *et al.*, 2008) that meet required specifications are commercially available. Recoveries for extracts of green coffee beans, roasted coffee and instant coffee-spiked at OTA concentrations between 0.5 and 6.5 µg/kg- were between 59.0 and 108.8% (Sugita-Konishi *et al.*, 2006; Bandeira *et al.*, 2012a; Vecchio *et al.*, 2012). Recoveries above 100% can be attributed to three types of interferences, i.e. formation of open-ring OTA during alkaline extraction, isomerization of OTA during roasting, and the presence of non-chlorinated analogue of OTA known as OTB (Tozlovanu and Pfohl-Leszkowicz, 2010).

Solid-phase clean-up methods

For some time now, various solid phase media have been employed in the extraction and sample clean-up of many different organic compounds, including OTA in coffee (Lindenmeier *et al.*, 2011; Kathurima *et al.*, 2012; Caprioli *et al.*, 2013; Fan *et al.*, 2013). The type of sorbent material used partly determines the performance of solid-phase extraction (SPE) and clean-up methods. In most cases, a sorbent with high affinity for the analyte in mobile phase is used to effect separation and clean-up. However, Lobeau *et al.* (2005) have developed a tandem assay column having a layer for adsorbing interfering substances in the sample. To prevent false positives in both high performance liquid chromatography (HPLC) and flow-through enzyme immunoassay (FTEIA), aminopropyl clean-up was used to restrict cross-reacting compounds while allowing the chromatographic elution of OTA (Sibanda *et al.*, 2002).

In a different method, a polymeric multifunctional column (MFC) which possessed reversed-phase and anion exchange functionalities was used for clean-up of OTA following its extraction with 1% sodium bicarbonate (Ventura *et al.*, 2003). High specificity of molecularly imprinted polymer (MIP) and simplicity of micro-solid phase extraction (μ -SPE) were combined in the method explained by Lee *et al.* (2012a). In this method, a porous membrane-protected μ -SPE column, loaded with MIP, was

employed in the extraction of OTA; desorption was subsequently performed under the influence of ultrasonication. Selection of the type and amount of mobile phase or elution solvent also significantly affect the performance of this approach. Sibanda *et al.*(2002) have found that the use of a mixture of methanol and 5% aqueous sodium bicarbonate, both as extraction solvent and as mobile phase, achieved a high partition coefficient for the extraction and clean-up of OTA. Although the introduction of SPE has resulted in a relative decrease in solvent consumption compared to LLE procedures, there is still a need for a greener approach. This is provided by the μ -SPE method explained by Lee *et al.*(2012b)in which only 400 μ L of methanol was used to desorb OTA from Zeolite Linde Type L sorbent under 5 min ultrasonication,.

Detection and Quantification of ota in Coffee

A study conducted by Vecchio *et al.* (2012) has revealed a high frequency of OTA contamination in instant coffee samples. Out of 50 commercial coffee products tested for different mycotoxins, 36% were positive for OTA (Vaclavik *et al.*, 2013). The daily consumption of OTA from coffee in Europe is 2-3 ng/kg bw (Mounjouenpou *et al.*, 2013), and Pittet *et al.*(1996) have found higher than normal figures of OTA in green coffee beans purchased in East European countries. Using a certified material and spiked samples, 69% of coffee beans, ground roasted coffee and soluble coffee products imported by Argentina were found contaminated by OTA (Vanesa and Ana, 2013). About 0.46 ng/g of this toxin was also found in sound Brazilian green coffee beans destined for exports (Gollucke *et al.*, 2004). Considering the importance of these findings vis-à-vis health implications of OTA, and to assist in complying with stipulated maximum limits, it becomes extremely necessary to continue to deploy sensitive, fast and accurate analytical methods for its detection in coffee.

While polymerase chain reaction (PCR) has been deployed as an important tool for the identification of OTA producing fungal species (Schmidt *et al.*, 2004; Morello *et al.*, 2007), methods are most importantly directed toward detection of the toxin in different food items. The bulk of these methods that have been applied for the quantification of OTA in coffee are by liquid chromatography (LC) in combination with several detection systems, such as fluorescence detection (FLD) or mass spectrometry (MS). These methods can be very selective and often have low limits of detection (LOD) that are sufficient for the sensitive detection of OTA in samples. Other applications in this regard include enzyme-linked immunosorbent assay (ELISA), and deoxyribonucleic acid (DNA) and peptide-based biochips. These applications are summarized in Table 1.

Methods based on liquid chromatography/High performance liquid chromatography

Techniques of LC are applied for the separation of components of a matrix between a stationary phase and a liquid mobile phase. This liquid phase varies with the type of application. The technique is sub-divided into two main forms, column and

planar, based on the form and design of the supporting material for the liquid or solid stationary phase. The liquid mobile phase is commonly driven by gravity or capillarity. In some instances, a low to moderate pressure is applied by mechanical means. Where high pressure is applied, the technique is referred to as HPLC. LC is also divided into normal and reversed-phase modes based on the polarity of the development solvent or mobile phase. The technique is commonly used for the analytical separation of mixture of organic compounds for both preparative and quantitative applications.

Methods based on the column type, in combination with various types of detection systems, were applied in the determination of OTA in coffee (Vargas *et al.*, 2004; Sugita-Konishi *et al.*, 2006; Bandeira *et al.*, 2008). Ventura *et al.*(2003) have developed a sensitive method (LOD, 0.1 ng/g) for the determination of OTA in 20 different coffee samples from different sources using a narrow-bore reversed-phase HPLC analysis with fluorescence detector and acetonitrile/water (0.1% formic acid) (40:60) mobile phase; results were confirmed by single quadruple-MS with ESI source. The official AOAC method for detection of OTA is IA-HPLC with FLD (Ahmed *et al.*, 2007), and this was applied in the determination of OTA in coffee at excitation wavelength (λ) of 332 nm and emission λ of 476 nm (Vargas *et al.*, 2005). A similar method was developed and validated by Diaz *et al.*(2004) for the analysis of OTA in soluble coffee and green coffee samples with respective limit of quantitation (LOQ) of 0.6 μ g/kg and 0.3 μ g/kg. Previously, a value comparable to that of soluble coffee was obtained for roasted coffee beans following a clean-up procedure with sequential phenylsilane and IAC (Entwisle *et al.*, 2001). During roasting of coffee beans, about 90% of OTA may be degraded, and two of its degradation products, one as a result of isomerization (14-(R)-OTA) and the other as result of decarboxylation (14-decarboxy-OTA), were quantified by HPLC-MS/MS (Cramer *et al.*, 2008).

The dearth of certified reference material (CRM) has been a major setback in the analysis of OTA. To overcome this challenge, an LC method with tandem-MS detection (LC/MS/MS) was proposed for the production of CRM that would be suitable for application in the determination of OTA in food samples (Bandeira *et al.*, 2008). This was achieved by the development of the European Reference Material for the determination of OTA in roasted coffee (ERM-BD475)(Koch *et al.*, 2011). Another LC/MS/MS was described for OTA determination in coffee using a SynergiHydro C₁₈ column, a mixture of 0.05% of trifluoroacetic acid and methanol (20:80, v/v) as mobile phase, and Selective Reaction Mode with positive electrospray ionization (SRM-ESI+) for detection (Bandeira *et al.*, 2012a); for the quantification of OTA, [M+H]⁺ m/z 239 and m/z 358, fragmentation products of a pseudo-molecular precursor ion, [M+H]⁺ m/z 404, were used. Argon and high purity nitrogen were employed as collision gas and nebulizer gas, respectively, and matrix-matched calibration curve was linear between OTA concentrations of 3.0 and 23.0 ng/g (Bandeira *et al.*, 2012b).

Thin layer chromatography

Thin layer chromatography (TLC) is an example of the planar LC in which the stationary phase material is thinly spread on a planar solid support such as glass. Development can be one-dimensional or two-dimensional. Detection of components of a sample is commonly through visual inspection. Applications of TLC are routinely found in analytical determinations of organic compounds.

One-dimensional TLC method, in both normal and reversed-phase modes, was developed for OTA determination in green coffee using visual and densitometric analyses, and results were positively correlated ($r > 0.99$) with those obtained from HPLC analysis (Santos and Vargas, 2002). No false positive or false negative was observed in the TLC screening method described by Pittet and Royer (2002) for the detection of OTA in green coffee at control level of 10 $\mu\text{g}/\text{kg}$. Ventura *et al.* (2005) have developed a cheap, rapid and easy method, based on normal two-dimensional TLC, for the determination of OTA in different coffee samples from different origins; toluene-methanol-formic acid (8:2:0.03, v/v/v) and petroleum ether-ethylacetate-formic acid (8:10:1, v/v/v) were used as the first and second dimension development solvents, respectively, and OTA content was estimated by visual inspection under UV lamp at 365 nm.

Other methods

Researchers are deploying a lot of efforts and resources in the development of new methods for the detection of OTA in coffee. Experiments with ELISA and biochips are showing promising results. A method based on indirect competitive ELISA that uses a monoclonal antibody (mAb) for the detection of OTA in freshly harvested coffee was described (Fujii *et al.*, 2006). Result obtained by this method showed positive correlation to that obtained by HPLC analysis ($r = 0.90$), and no cross-reaction was observed between the antibodies and two analogs of OTA (OTB and OT α). Due to possibly the presence of matrix effect in ELISA, higher values of OTA were recorded compared to HPLC results, with the highest calculated ELISA/HPLC values for green coffee, roasted coffee and instant coffee as 1.46, 1.11, and 1.82, respectively. In order to match results of ELISA with findings from stable isotope dilution assay (SIDA), therefore, IA chromatography was performed as an extract clean-up before ELISA (Lindenmeier *et al.*, 2011). Sibanda *et al.* (2001) had earlier developed an FTEIA-based method which did not display any false positives or negatives during screening trials performed on green coffee bean samples.

Combining a flow-through reagent, a stand-alone automated Munich Chip Reader 3 (MCR3) platform, and chemiluminescence detection, a fast method of indirect competitive immunoassay was developed by Saucedo-Friebe *et al.* (2011) for the screening of OTA in green coffee extracts. The biochip was constructed by contact spotting immobilization of a peptide-functionalized OTA analog on a glass plate. Recently, Mun *et al.* (2013) have described a method with the shortest reported total assay time of 10 min for the detection of OTA in

coffee. In this method called chemiluminescence resonance energy transfer (CRET), a biosensor was constructed using a single-stranded DNA, and this can detect as low as 0.5 parts per billion (ppb) concentration of OTA in coffee without cross reaction to other mycotoxins. A highly stable colorimetric aptamer sensor-based method was described for the detection of OTA at a very low concentration of about 1 nM (Lee *et al.*, 2014). This detection limit could be further lowered to 0.75 pM by using methylene blue as a redox indicator for a two-level cascaded signal amplification strategy (Yang *et al.*, 2014). Apart from very low detection limits, another advantage of using such specific aptamers is their high selectivity for OTA to the detriment of its analogs such as N-acetyl-l-phenylalanine and zearalenone (Lv *et al.*, 2014).

CONCLUSIONS

OTA is an important mycotoxin produced, as a secondary metabolite, by primarily two genera of fungus, *Aspergillus* and *Penicillium*. Research findings have indicated its nephrotoxicity and hepatotoxicity among other deleterious effects. Occurrence of this toxin in coffee, a world-acclaimed beverage and a source of important chemicals, is a serious source of concern to both producers of coffee beans and to consumers of coffee products alike. This has prompted the European Commission to stipulate limits for the level of OTA in roasted coffee beans and in instant coffee. To assist in abiding by these regulatory codes, different analytical methods, including chromatographic applications, and peptide and DNA biochips, have been developed and applied to the determination of OTA in coffee products. There is, however, a continuous need for improvement in these methods in order to ultimately cut down the total analysis time and to improve sensitivity of determination. This measure will aid in safeguarding consumer health and ensuring quality of coffee as an important stimulant and a good source of bioactive compounds with many important health benefits.

ACKNOWLEDGMENT

I am grateful to the King Fahd University of Petroleum and Minerals for providing the avenue for this work.

REFERENCES

- Abdu S, Ali A, Ansari S. Cytotoxic effect of Ochratoxin A on the renal corpuscles of rat kidney: could Ochratoxin A cause kidney failure? *Histol Histopathol.*, 2011; 26:543-549.
- Ahmad MF, Saleemi MK, Khan MZ, Muhammad F, Hassan ZU, Khatoon A, Bhatti SA, Abbas RZ, Rizvi F, Ahmed I. Effects of ochratoxin A feeding in white Leghorn cockerels on hematological and serum biochemical parameters and its amelioration with silymarin and vitamin E. *Pak Vet J.*, 2012; 32(4):520-524.
- Ahmed NE, Farag MM, Soliman KM, Abdel-Samed AKM, Naguib KM. Evaluation of methods used to determine ochratoxin A in coffee beans. *Food Chem.*, 2007; 55(23):9576-9580.
- Ali R, Mittelstaed RA, Shaddock JG, Ding W, Bhalli JA, Khan QM, Heflich RH. Comparative analysis of micronuclei and DNA damage induced by ochratoxin A in two mammalian cell lines. *Mutat Res-Gen Tox En.* 2011; 723(1): 58-64.
- Amézqueta S, Schorr-Galindo S, Murillo-Arbizu M, González-Peñas E, López de Cerain A, Guirau JP. OTA-producing fungi in food

stuffs: A review. *Food Control*, 2012; 26(2): 259–268.

Anand S, Rati ER. An enzyme-linked immunosorbent assay for monitoring of *Aspergillus ochraceus* growth in coffee powder, chilli powder and poultry feed. *Lett Appl Microbiol*, 2005; 42:59–65.

Aqai P, Peters J, Gerssen A, Haasnoot W, Nielen MWF. Immunomagnetic micro beads for screening with flow cytometry and identification with nano-liquid chromatography mass spectrometry of ochratoxins in wheat and cereal. *Anal Bioanal Chem*, 2011; 400(9):3085–3096.

Bandeira RDCC, Uekane TM, Cunha CP, Costa DAC, Cruz MHC, Godoy RLO, Cunha VS, Rodrigues J. Development of method for ochratoxin A analysis in coffee by liquid chromatography/electrospray tandem mass spectrometry. *Simposio de Metrología*. Santiago de Querétaro, México, 22 al 24 de Octubre, SM2008-M103-1033.

Bandeira RDCC, Uekane TM, Cunha CP, Geaquinto LRO, Cunha VS, Caixeiro JMR. Development and validation of a method for the analysis of ochratoxin A in roasted coffee by liquid chromatography/electrospray-mass spectrometry in tandem (LC/ESI-MS/MS). *Quim. Nova*, 2012a; 35(1):66-71.

Bandeira RDCC, Uekane TM, Cunha CP, Cunha VS, Rodrigues JM, Godoy RLO, Cruz MHC. Development and validation of a method for detection and quantification of ochratoxin A in green coffee using liquid chromatography coupled to mass spectrometry. *Ciênc. Tecnol. Aliment. Campinas*, 2012b; 32(4):775-782.

Bertuzzi T, Gualla A, Morlacchini M, Pietri A. Direct and indirect contamination with ochratoxin A of ripened pork products. *Food Control*, 2013; 34(1): 79–83.

Biasucci G, Calabrese G, Giuseppe RD, Carrara G, Colombo F, Mandelli B, Maj M, Bertuzzi T, Rossi PF. The presence of ochratoxin A in cord serum and in human milk and its correspondence with maternal dietary habits. *Eur J Nutr*, 2010; 50(3):211-218.

Bokhari FM. Mycotoxins and Toxicogenic Fungi in Arabic Coffee Beans in Saudi Arabia. *Advan Biol Res*, 2007; 1(1-2):56-66, 2007.

Bösch-Saadatmandi C, Hundhausen C, Jofre-Monseny L, Blank R, Wolfram S, Rimbach G. Ochratoxin A-induced cytotoxicity in liver (HepG2) cells: Impact of serum concentration, dietary antioxidants and glutathione-modulating compounds. *J Appl Bot Food Qual*, 2006; 80:179–186.

Bucheli P, Taniwaki MH. Research on the origin, and on the impact of post-harvest handling and manufacturing on the presence of ochratoxin A in coffee. *Food Addit Contam*, 2002; 19(7):655-665.

Burbano EG, Wright MG, Gillette NE, Mori S, Dudley N, Jones T, Kaufmann M. Efficacy of traps, lures, and repellents for *Xylosandrus compactus* (Coleoptera: Curculionidae) and other Ambrosia beetles on *Coffea arabica* plantations and *Acacia koa* nurseries in Hawaii. *Environ. Entomol*, 2012; 41(1): 133-140.

Cabañes FJ, Bragulat MR, Castellá G. Ochratoxin A producing species in the genus *Penicillium*. *Toxins*, 2010; 2:1111-1120.

Caprioli G, Cortese M, Odello L, Ricciutielli M, Sagratini G, Tomassoni G, Torregiani E, Vittori S. Importance of espresso coffee machine parameters on the extraction of chlorogenic acids in a certified Italian espresso by using SPE-HPLC-DAD. *J Food Res*, 2013; 2(3):55-64.

Castellanos-Onorio O, Gonzalez-Rios O, Guyot B, Fontana TA, Guiraud JP, Schorr-Galindo S, Durand N, Suárez-Quiroz M. Effect of two different roasting techniques on the Ochratoxin A (OTA) reduction in coffee beans (*Coffea arabica*). *Food Control*, 2011; 22(8):1184–1188.

Clark HA, Snedeker SM. Ochratoxin a: Its cancer risk and potential for exposure. *J Toxicol Env Heal B*, 2006; 9(3):265-296.

Cramer B, Königs M, Humpf H-U. Identification and in vitro cytotoxicity of ochratoxin A degradation products formed during coffee roasting. *J. Agric. Food Chem.*, 2008; 56 (14):5673–5681.

Cremer B, Soja A, Sauer JA, Damm M. Pro-inflammatory effects of ochratoxin A on nasal epithelial cells. *Eur Arch Otorhinolaryngol*, 2012; 269(4):1155-1161.

Czakai K, Muller K, Mosesso P, Pepe MS, Goha A, Patnaik D, Dekant W, Higgins J MG, Mally A. Perturbation of mitosis through inhibition of histone acetyltransferases: The key to ochratoxin A toxicity and carcinogenicity? *Toxicol. Sci.*, 2011; 122 (2):317-329.

Diaz GJ, Ariza D, Perilla NS. Method validation for the determination of ochratoxin A in green and soluble coffee by immunoaffinity column cleanup and liquid chromatography. *Mycotoxin Res*, 2004; 20(2):59-67.

Dijk AE, Olthof MR, Meeuse JC, Seebus E, Heine RJ, Dam RM. Acute effects of decaffeinated coffee and the major coffee components chlorogenic acid and trigonelline on glucose tolerance. *Diabetes Care*, 2009; 32(6):1023-1025.

Duarte SC, Peana A, Lino CM. Human ochratoxin A biomarkers-From exposure to effect. *Crit Rev Toxicol*, 2011; 41(3):187-212.

Duarte SC, Pena A, Lino CM. Ochratoxin A non-conventional exposure sources -A review. *Microchem J*, 2009; 93(2):115–120.

EFSA-Q-2005-154. Opinion of the scientific panel on contaminants in the food chain on a request from the commission related to ochratoxin A in food. *EFSA J*, 2006; 365:1 – 56.

Entwisle AC, Williams AC, Mann PJ, Russell J, Slack PT, Gilbert J. Combined phenyl silane and immunoaffinity column cleanup with liquid chromatography for determination of ochratoxin A in roasted coffee: Collaborative study. *J AOAC Int.*, 2001; 84(2):444-450.

Esquivel P, Jiménez VM. Functional properties of coffee and coffee by-products. *Food Res Int*, 2012; 46(2):488–495.

Fan H, Deng Z, Zhong H, Yao Q. Development of new solid phase extraction techniques in the last ten years. *J. Chin. Pharm. Sci.*, 2013; 22 (4):293–302.

Fernández-Baldo MA, Bertolino FA, Fernández G, Messina GA, Sanza MI, Raba J. Determination of ochratoxin A in apples contaminated with *Aspergillus ochraceus* by using a microfluidic competitive immunosensor with magnetic nanoparticles. *Analyst*, 2011; 136:2756-2762.

Frizzell C, Verhaegen S, Ropstad E, Elliott CT, Connolly L. Endocrine disrupting effects of ochratoxin A at the level of nuclear receptor activation and steroidogenesis. *ToxicolLett*, 2013; 217(3):243–250.

Fujii S, Ono EYS, Ribeiro RMR, Assuncao FGA, Takabayashi CR, Oliveira TCRM, Itano EN, Ueno Y, Kawamura O, Hirooka EY. A comparison between enzyme immunoassay and HPLC for ochratoxin A detection in green, roasted and instant coffee. *Braz Arch BiolTechn*, 2007; 50(2): 349-359.

Fujii S, Ribeiro RMR, Scholz MBS, Ono EYS, Prete CEC, Itano EN, Ueno Y, Kawamura O, Hirooka EY. Reliable indirect competitive ELISA used for a survey of ochratoxin A in green coffee from the North of Paraná State, Brazil. *Food Addit Contam*, 2006;23(9):902-909.

Gambelli L, D'Addezio L. Ochratoxin A in wine consumers in Italy: dietary profiles. *World Mycotoxin J*, 2009; 2(3):339-346.

Gil-Serna J, Vazquez C, Sardinias N, González-Jaén MT, Patiño B. Revision of ochratoxin A production capacity by the main species of *Aspergillus* section Circumdati. *Aspergillus steynii* revealed as the main risk of OTA contamination. *Food Control*, 2011; 22(2):343–345.

Gollücke APB, Taniwaki MH, Tavares DQ. Survey on ochratoxin A in Brazilian green coffee destined for exports. *Food Sci Technol (Campinas)*, 2003; 24(4):641-645.

Graziani G, Santini A, Ferracane R, Ritieni A. Microwave-assisted extraction of ochratoxin A from roasted coffee beans: An alternative analytical approach. *J Food Res*, 2012; 1(3):121-127.

Hennemeier I, Humpf H-U, Gekle M, Schwerdt G. The food contaminant and nephrotoxin ochratoxin A enhances Wnt1 inducible signaling protein 1 and tumor necrosis factor- α expression in human primary proximal tubule cells. *Mol. Nutr. Food Res.*, 2012; 56:1375–1384.

Hibi D, Suzuki Y, Ishii Y, Jin M, Watanabe M, Sugita-Konishi Y, Yanai T, Hohmi T, Nishikawa A, Umemura T. Site-specific in vitro mutagenicity in kidney of gpt delta rats given a carcinogenic dose of ochratoxin A. *Toxicol. Sci.*, 2011; 122 (2):406-414.

Iamanaka BT, Teixeira AA, Teixeira ARR, Copetti MV, Bragagnolo N, Taniwaki MH. The mycobiota of coffee beans and its influence on the coffee beverage. *Food Res Int*, 2014; 61:33-38.

Jayeola CO, Oluwadun A, Yahaya LE, Dongo LN, Ajao AA, Mokwunye FC. Comparative analysis of detecting ochratoxin A in cocoa

powder samples using high performance liquid chromatography (HPLC) and enzyme-linked immunosorbent assay (ELISA). *Afr J Food Sci*, 2011; 5(8):513 – 521.

Kathurima C, Kenji G, Muhoho S, Boulanger R, Ng'ang'a F. Volatile organic compounds in brewed Kenyan Arabica coffee genotypes by solid phase extraction gas chromatography mass spectrometry. *Food Sci Qual Manage*, 2012; 8: 18-26.

Kathurima CW, Gichimu BM, Kenji GM, Muhoho SM, Boulanger R. Evaluation of beverage quality and green bean physical characteristics of selected Arabica coffee genotypes in Kenya. *Afr J Food Sci*, 2009; 3(11):365-371.

Kaushik A, Arya SK, Vasudev A, Bhansali S. Recent advances in detection of Ochratoxin-A. *Open J. Appl Biosens*, 2013; 2:1-11.

Khoury A, Atoui A. Ochratoxin A: General overview and actual molecular status. *Toxins*, 2010; 2:461-493.

Koch M, Bremser W, Koppen R, Kruger R, Rasenko T, Siegel D, Nehls I. Certification of reference materials for ochratoxin A analysis in coffee and wine. *Accredit Qual Assur*, 2011; 16(8-9):429-437.

Köppen R, Koch M, Siegel D, Merkel S, Maul R, Nehls I. Determination of mycotoxins in foods: current state of analytical methods and limitations. *Appl Microbiol Biotechnol*, 2010; 86(6):1595-1612.

Ky C-L, Louarn J, Dussert S, Guyot B, Hamon S, Noirot M. Caffeine, trigonelline, chlorogenic acids and sucrose diversity in wild *Coffea arabica* L. and *C. canephora* P. accessions. *Food Chem*, 2001; 75(2):223–230.

Lee J, Jeon CH, Ahn SJ, Ha TH. Highly stable colorimetric aptamer sensors for detection of ochratoxin A through optimizing the sequence with the covalent conjugation of hemin. *Analyst*, 2014; 139:1622-1627.

Lee TP, Saad B, Khayoon WS, Salleh B. Molecularly imprinted polymer as sorbent in micro-solid phase extraction of ochratoxin A in coffee, grape juice and urine. *Talanta*, 2012a; 88:129–135.

Lee TP, Saad B, Ng, EP, Salleh B. Zeolite Linde Type L as micro-solid phase extraction sorbent for the high performance liquid chromatography determination of ochratoxin A in coffee and cereal. *J. Chromatogr A*, 2012b; 1237:46–54.

Lindenmeier M, Schieberle P, Rychlik M. Determination of ochratoxin A in food: comparison of a stable isotope dilution assay, liquid chromatography-fluorescence detection and an enzyme-linked immunosorbent assay. *Mycotoxin Res*, 2011; 27(2):115-121.

Lobeau M, Saeger De Saeger S, Sibanda L, Barna-Vetró I, Peteghem CV. Development of a new clean-up tandem assay column for the detection of ochratoxin A in roasted coffee. *Analytica Chimica Acta*, 2005; 538(1–2):57–61.

Lv Z, Chen A, Liu J, Guan Z, Zhou Y, Xu S, Yang S, Li C. A Simple and Sensitive Approach for Ochratoxin A Detection Using a Label-Free Fluorescent Aptasensor. *PLoS ONE*, 2014; 9(1): e85968. doi:10.1371/journal.pone.0085968

Mantle P. G., Faucet-Marquis V, Manderville RA, Squillaci B, Pfohl-Leszkowicz A. Structures of covalent adducts between DNA and ochratoxin A: A new factor in debate about genotoxicity and human risk assessment. *Chem. Res. Toxicol*, 2010; 23(1): 89–98.

Martins ML, Martins HM, Gimeno A. Incidence of microflora and of ochratoxin A in green coffee beans (*Coffea arabica*). *Food AdditContam*, 2003; 20(12):1127-1131.

Micco C, Grossi M, Miraglia M, Brera C. A study of the contamination by ochratoxin A of green and roasted coffee beans. *Food AdditContam*, 1989; 6(3):333-339.

Miran J. Space, mobility, and translocal connections across the Red Sea area since 1500. *Northeast Afr Stud*, 2012; 12(1):9-26.

Monaci L, Palmisano F. Determination of ochratoxin A in foods: state-of-the-art and analytical challenges. *Anal Bioanal Chem*, 2004; 378(1):96-103.

Moon J-K, Yoo HS, Shibamoto T. Role of roasting conditions in the level of chlorogenic acid content in coffee beans: Correlation with coffee acidity. *J. Agric. Food Chem*, 2009; 57(12):5365–5369.

Morello LG, Sartori D, Martinez ALO, Vieira MLC, Taniwaki MH, Fungaro MHP. Detection and quantification of *Aspergillus westerdijkiae* in coffee beans based on selective amplification of

β-tubulin gene by using real-time PCR. *Int J Food Microbiol*, 2007; 119:270–276.

Mounjouenpou P, Durand N, Guiraud J-P, Tetmoun SAM, Gueule D, Guyot B. Assessment of exposure to ochratoxin – A (OTA) through ground roasted coffee in two Cameroonian cities: Yaounde and Douala. *Int J Food Sci Nutr Eng*, 2013; 3(3):35-39.

Mounjouenpou P, Gueule D, Ntoupka M, Durand N, Fontana-Tachon A, Guyot B, Guiraud JP. Influence of post-harvest processing on ochratoxin A content in cocoa and on consumer exposure in Cameroon. *World Mycotoxin J*, 2011; 4(2):141-146.

Mun H, Jo E, Joung HA, Li T, Shim W-B, Kim M-G. The Smart DNA-based chemiluminescence resonance energy transfer (CRET) for the detection of ochratoxin A in coffee. *IAFP*, P3-68, July 28-31, 2013, North Carolina.

Nehad EA, Farag MM, Kawther MS, Abdel-Samed AKM, Naguib K. Stability of ochratoxin A (OTA) during processing and decaffeination in commercial roasted coffee beans. *Food Addit Contam*, 2005; 22(8):761-767.

Noba S, Uyama A, Mochizuki N. Determination of ochratoxin A in ready-to-drink coffee by immunoaffinity cleanup and liquid chromatography–tandem mass spectrometry. *J. Agric. Food Chem*, 2009; 57(14):6036–6040.

Nugroho A. The Impact of Food Safety Standard on Indonesia's Coffee Exports. *Procedia EnvSci*, 2014; 20:426-433.

Nuhu AA. Bioactive Micronutrients in Coffee: Recent Analytical Approaches for Characterization and Quantification. *ISRN Nutrition*, 2014; 2014:1-13.

Oliveira G, Silva DM, Pereira RGFA, Paiva LC, Prado G, Batista LR. Effect of different roasting levels and particle sizes on ochratoxin A concentration in coffee beans. *Food Control*, 2013; 34(2): 651–656.

Palacios-Cabrera H, Taniwaki MT, Menezes HC, Iamanaka BT. The production of ochratoxin A by *Aspergillus ochraceus* in raw coffee at different equilibrium relative humidity and under alternating temperatures. *Food Control*, 2004; 15(7):531–535.

Pardo E, Marin S, Ramos AJ, Sanchis V. Occurrence of ochratoxigenic fungi and ochratoxin A in green coffee from different origins. *Food Sci Technol Int*, 2004; 10(1):45-49.

Perrone G, Susca A, Cozzi G, Ehrlich K, Varga J, Frisvad JC, Meijer M, Noonim P., Mahakarnchanakul W, Samson RA. Biodiversity of *Aspergillus* species in some important agricultural products. *Stud Mycol*, 2007; 59:53–66.

Pittet A, Royer D. Rapid, low cost thin-layer chromatographic screening method for the detection of ochratoxin A in green coffee at a control level of 10 µg/kg. *J. Agric. Food Chem.*, 2002; 50 (2):243–247.

Pittet A, Tornare D, Huggett A, Viani R. Liquid chromatographic determination of ochratoxin A in pure and adulterated soluble coffee using an immunoaffinity column cleanup procedure. *J. Agric. Food Chem.*, 1996; 44 (11):3564–3569.

Poór M, Kunsági-Máté S, Bencsik T, Petrik J, Vladimír-Knežević S, Koszeg T. Flavonoid aglycones can compete with Ochratoxin A for human serum albumin: A new possible mode of action. *Int J Biol Macromol*, 2012; 51(3):279–283.

Prediger RDS. Effects of caffeine in Parkinson's disease: From neuroprotection to the management of motor and non-motor symptoms. *J Alzheimers Dis*, 2010; 20(1):205-220.

Rahimi K, Sani AM, Azizi EG. Effect of thermal treatment on ochratoxin content of chickpea. *Nutr Food Sci*, 2013; 43(3):285 – 290.

Romani S, Pinnavaia GG, Rosa MD. Influence of roasting levels on ochratoxin A content in coffee. *J. Agric. Food Chem*, 2003; 51:5168-5171.

Roswitha G, Klaus L. Simultaneous determination of aflatoxins, ochratoxin A, and zearalenone in grains by new immunoaffinity column/liquid chromatography. *J AOAC Int.*, 2004; 87(2):411-416.

Santos EA, Vargas EA. Immunoaffinity column clean-up and thin layer chromatography for determination of ochratoxin A in green coffee. *Food Addit Contam*, 2002; 19(5):447-458.

Sauceda-Friebe JC, Karsunke XYZ, Vazac S, Biselli S, Niessner R, Knopp D. Regenerable immuno-biochip for screening

ochratoxin A in green coffee extract using an automated microarray chip reader with chemiluminescence detection. *Anal Chim Acta*, 2011; 689(2):234–242.

Schmidt H, Taniwaki MH, Vogel RF, Niessen L. Utilization of AFLP markers for PCR-based identification of *Aspergillus carbonarius* and indication of its presence in green coffee samples. *J Appl Microbiol*, 2004; 97:899–909.

Serra F, Guillou CG, Reniero F, Ballarin L, Cantagallo MI, Wieser M, Iyer SS, Heberger K, Vanhaecker F. Determination of the geographical origin of green coffee by principal component analysis of carbon, nitrogen and boron stable isotope ratios. *Rapid Commun Mass Spectrom*, 2005; 19:2111–2115.

Sibanda L, De Saeger S, Barna-Vetro I, Peteghem CV. Development of a solid-phase cleanup and portable rapid flow-through enzyme immunoassay for the detection of ochratoxin A in roasted coffee. *J. Agric. Food Chem.*, 2002; 50 (24): 6964–6967.

Sibanda L, Saeger S, Bauters TGM, Nelis HJ, Peteghem C. Development of a flow-through enzyme immunoassay and application in screening green coffee samples for ochratoxin A with confirmation by high-performance liquid chromatography. *J Food Prot*, 2001; 64(10):1597-1602.

Sridevi V, Giridhar P, Ravishankar GA. Evaluation of roasting and brewing effect on antinutritional diterpenes-cafestol and kahweol in coffee. *Global J Med Res*, 2011; 11(5):1-7.

Stachurska A, Kozakowska M, Jozkowicz A, Dulak J, Loboda A. Aristolochic acid I and ochratoxin A differentially regulate VEGF expression in porcine kidney epithelial cells—The involvement of SP-1 and HIFs transcription factors. *Toxicol Lett.*, 2011; 204(2-3):118–126.

Stoev SD. Studies on carcinogenic and toxic effects of ochratoxin A in chicks. *Toxins*, 2010; 2:649-664.

Studer-Rohr I, Dietrich DR, Schlatter J, Schlatter C. The occurrence of ochratoxin A in coffee. *Food Chem Toxicol*, 1995; 33(5):341–355.

Sugita-Konishi Y, Tanaka T, Nakajima M, Fujita K, Norizuki H, Mochizuki N, Takatori K. The comparison of two clean-up procedures, multifunctional column and immunoaffinity column, for HPLC determination of ochratoxin A in cereals, raisins and green coffee beans. *Talanta*, 2006; 69(3):650–655.

The Commission of the European Communities, (EC) No 1881/2006. Setting maximum levels for certain contaminants in foodstuffs. *Official J EU L364*, 5-24.

Tozlovanu M, Pfohl-Leskowicz A. Ochratoxin A in roasted coffee from French supermarkets and transfer in coffee beverages: Comparison of analysis methods. *Toxins*, 2010; 2:1928-1942.

Trucksess MW, Weaver CM, Oles CJ, Jr. FSF, Noonan GO. Determination of aflatoxins B₁, B₂, G₁, and G₂ and ochratoxin A in ginseng and ginger by multitoxin immunoaffinity column cleanup and liquid chromatographic quantitation: Collaborative study. *J AOAC Int.*, 2008; 91(3):511–523.

Tsubouchi H, Terada H, Yamamoto K, Hisada K, Sakabe Y. Ochratoxin A found in commercial roast coffee. *J. Agric. Food Chem.*, 1988; 36(3):540–542.

Tucker CM, Eakin H, Castellanos EJ. Perceptions of risk and adaptation: Coffee producers, market shocks, and extreme weather in Central America and Mexico. *Global Environ Chang*, 2010; 20:23–32.

Turner NW, Subrahmanyam S, Piletsky SA. Analytical methods for determination of mycotoxins: A review. *Anal Chim Acta*, 2009; 632(2):168–180.

Vaclavik L, Vaclavikova M, Begley TH, Krynitsky AJ, Rader JI. Determination of multiple mycotoxins in dietary supplements containing green coffee bean extracts using ultrahigh-performance liquid chromatography–tandem mass spectrometry (UHPLC-MS/MS). *J. Agric. Food Chem.*, 2013; 61(20):4822–4830.

Vanesa D, Ana P. Occurrence of ochratoxin A in coffee beans, ground roasted coffee and soluble coffee and method validation. *Food Control*, 2013; 30(2):675–678.

Vargas EA, Santos EA, Pittet A. Determination of ochratoxin A in green coffee by immunoaffinity column cleanup and liquid chromatography: Collaborative study. *J AOAC Int.*, 2005; 88(3):773-779.

Vargas EA, Whitaker TB, Santos EA, Slate AB, Lima AB, França RCA. Testing green coffee for ochratoxin A, Part I: Estimation of variance components. *J AOAC Int.*, 2004; 87(4):884-891.

Vecchio A, Mineo V, Planeta D. Ochratoxin A in instant coffee in Italy. *Food Control*, 2012; 28(2):220–223.

Velmourougane K, Bhat R, Gopinandhan TN. Impact of drying surface and raking frequencies on mold incidence, Ochratoxin A contamination, and cup quality during preparation of Arabica and Robusta cherries at the farm level. *Foodborne Pathog Dis*, 2010; 7(11):1435-1440.

Ventura M, Anaya I, Broto-Puig F, Agut M, Comellas L. Two-dimensional thin-layer chromatographic method for the analysis of ochratoxin A in green coffee. *J Food Prot*, 2005; 68(9):1920-1922.

Ventura M, Vallejos C, Anaya IA, Broto-Puig F, Agut M, Comellas L. Analysis of ochratoxin A in coffee by solid-phase cleanup and narrow-bore liquid chromatography–fluorescence detector–mass spectrometry. *J. Agric. Food Chem.*, 2003; 51 (26): 7564–7567.

Vincenzo L, Michelangelo P, Stefania V, Angelo V. Comparison of slurry mixing and dry milling in laboratory sample preparation for determination of ochratoxin A and deoxynivalenol in wheat. *J. AOAC Int.*, 2012; 95(2):452-458.

Wangikar PB, Dwivedi P, Sinha N. Teratogenic effects of ochratoxin A in rabbits. *World Rabbit Sci.*, 2004; 12:159 – 171.

Woo CSJ, Wan MLY, Ahokas J, El-Nezami H. Potential endocrine disrupting effect of ochratoxin A on human placental 3 β -hydroxysteroid dehydrogenase/isomerase in JEG-3 cells at levels relevant to human exposure. *Reprod Toxicol*, 2013; 38:47–52.

Wu J, Tan Y, Wang Y, Xu R. Occurrence of ochratoxin A in wine and beer samples from China *Food Addit Contam B*, 2011; 4(1):52-56.

Yang X, Qian J, Jiang L, Yan Y, Wang K, Liu Q, Wang K. Ultrasensitive electrochemical aptasensor for ochratoxin A based on two-level cascaded signal amplification strategy. *Bioelectrochemistry*, 2014; 96:7-13.

Yoshinari O, Igarashi K. Anti-diabetic effect of trigonelline and nicotinic acid, on KK-Ay Mice. *Curr Med Chem*, 2010; 17(20):2196-2202.

Zepnik H, Volkel W, Dekant W. Toxicokinetics of the mycotoxin ochratoxin A in F 344 rats after oral administration. *Toxicol Appl Pharmacol*, 2003; 192(1):36–44.

How to cite this article:

Abdulummin A Nuhu. Occurrence, harmful effects and analytical determination of Ochratoxin A in coffee. *J App Pharm Sci*, 2015; 5 (01): 120-127.